



Part 1 ■ WIONET Company Profile

Facts, people, processes, technology

10'



Part 2 ■ Aftersales Projects

From IT and Content Management to CAT translation

15'



Part 3 ■ Owner's Experience

Is paper still necessary? How about mobile devices?

15'



Part 4 ■ Marketing Challenges

Writers tell. Copywriters sell.

15'



Part 5 ■ Added Value

How can we bring value to your business?

?'



Part 1 ■ WIONET Company Profile

Facts, people, processes, technology

10'



Part 2 ■ Aftersales Projects

From IT and Content Management to CAT translation

15'



Part 3 ■ Owner's Experience

Is paper still necessary? How about mobile devices?

15'



Part 4 ■ Marketing Challenges

Writers tell. Copywriters sell.

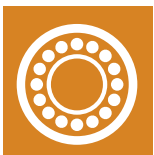
15'



Part 5 ■ Added Value

How can we bring value to your business?

?'



Key facts and figures:

- **WIONET** – **W**orld **I**nformation **O**perating **N**etwork — multilingual translation and localization company
- Established in Korea in 1997
- Regional offices in Korea and Poland
- Global network of Partners and Vendors with proven capabilities and confirmed quality of services
- Qualified Teams in 35 Countries in all geographies
- Multilingual translation and localization services in over 45 languages





Company Profile

Multilingual Vendor (MLV)



In-country language services. Over 45 combinations.

Asian & Far East:

- Korean
- Indonesian
- Japanese
- Chinese Simplified
- Chinese Traditional
- Malay
- Thai
- Vietnamese

American:

- English American
- French Canadian
- Spanish Latin
- Portuguese Brazilian

West European (WE):

- English UK
- French European
- German
- Greek
- Italian
- Portuguese European
- Spanish European
- Turkish

East European (EE):

- Belarusian
- Bulgarian
- Croatian
- Czech
- Estonian
- Hungarian
- Latvian
- Lithuanian
- Polish
- Romanian
- Russian
- Slovak
- Ukrainian

Central Asian & Middle East:

- Kazakh
- Daghestanis
- Arabic
- Farsi
- Urdu

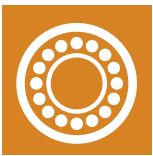
North European (NE):

- Danish
- Dutch
- Finnish
- Norwegian
- Swedish



Anywhere... Any language...

** This list is not exhaustive. Please contact us for details.*



Company Profile

Core capabilities



Language

- Multilingual translation
- Technical translation
- Software localization
- Linguistic style
- Terminology
- Consultancy

Marketing

- Transcreation
- Creative services
- Campaign management
- Social media

Turnkey information services



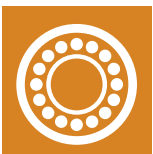
Technology

- Consultancy services
- Software development
- Content management
- Adobe AEM
- Programming
- Big Data & analytics

Publishing

- Graphic design
- Desk-top publishing
- Printing
- Distribution

Automotive sector



Project experience

Key clients



The Power to Surprise

Brands: Hyundai, Kia
Languages: 5 European



Mercedes-Benz

Brands: Mercedes
Languages: 9 European, 6 Asian



Brands: Mitsubishi, Nissan, Infiniti
Languages: 12 European



Brands: Panasonic
Languages: 4 European

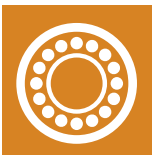


IVECO

Brands: FIAT, IVECO
Languages: 4 European



Brands: Samsung Electronics
Languages: 40+ languages



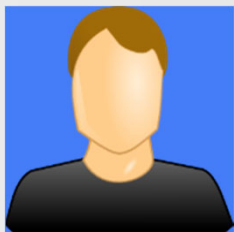
Company Profile

Automotive Team — Poland



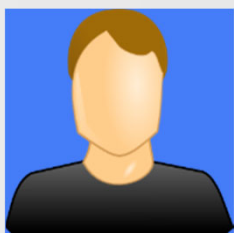
Technical Editor, Dealer Relationship Manager

Over 30 years of automotive engineering experience — Peugeot, Ford, Kia, Subaru
Former Service Manager at Marvel Sp. z o.o. — Awarded Kia Motors Dealer in Łódź, Poland
Languages: Polish, English



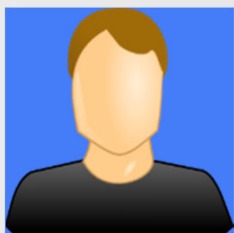
Technical Editor

Over 20 years of automotive engineering experience — FSO, Daewoo, Dräxlmaier
Senior designer of automotive electric harnesses at Dräxlmaier Poland
Languages: Polish, English, German



Technical Editor

Over 30 years of automotive engineering experience — FIAT, Ford
Currently Training Manager at Ford Poland
Languages: Polish, English, Italian



Technical Editor

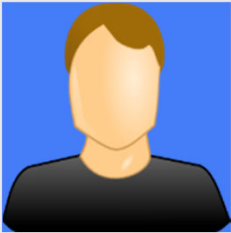
Over 30 years of automotive engineering experience — PIMOT, Bosch, DaimlerChrysler
Former Area Service Manager at DaimlerChrysler Automotive Poland
Languages: Polish, English





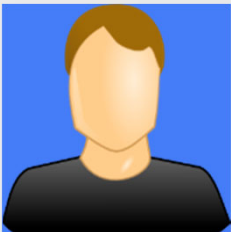
Company Profile

Automotive Team — Czech Republic and Slovakia



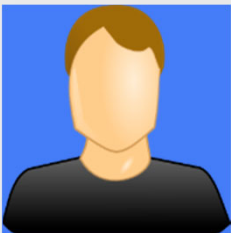
Technical Editor

Over 30 years of automotive engineering experience — Kia and other brands
Former Aftersales Manager at Kia Motors Czech Republic and Autobond Group
Languages: Czech, English



Technical Editor

Over 30 years of automotive engineering experience — Fiat, DaimlerChrysler and Škoda
Former Technical Training Manager at DaimlerChrysler Czech Republic
Languages: Czech, English



Technical Translator

Over 20 years of automotive engineering experience — DAF, Kia, Iveco, Isuzu and Scania
Currently IT Manager at DAF Czech Republic
Languages: Czech, English



Technical Translator

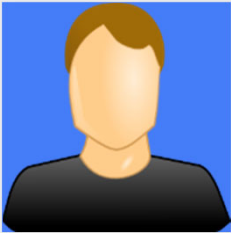
Over 20 years of automotive engineering experience with various brands
Currently involved in our automotive projects for Kia and Hyundai in Czech Republic
Languages: Czech, English





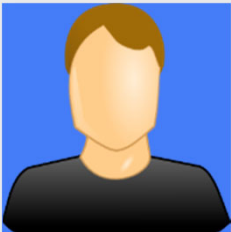
Company Profile

Automotive Team — Hungary



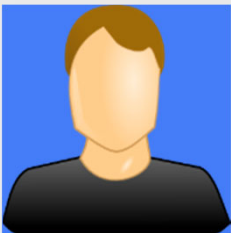
Technical Editor

Over 20 years of automotive engineering experience — Kia, Ford and Renault
Currently Technical Trainer for Kia Hungary
Languages: Hungarian, English



Technical Editor

Over 20 years of automotive engineering experience — Nissan, Chevrolet and Opel
Currently Technical Trainer for Nissan Hungary
Languages: Hungarian, Serbian, English



Technical Translator

Over 20 years of automotive engineering experience — Suzuki, Kia, Nissan
Automotive accident reconstruction specialist
Languages: Hungarian, English



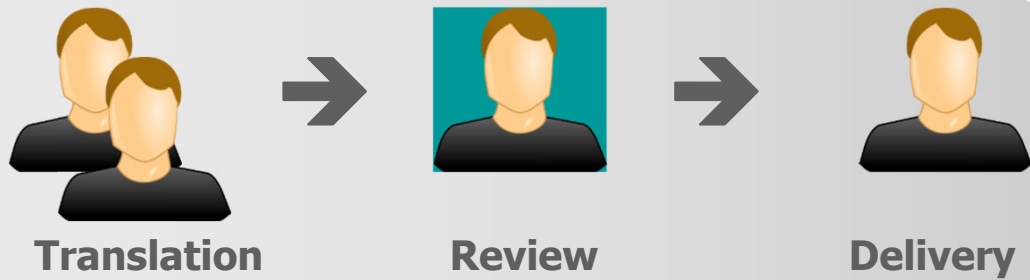


Company Profile

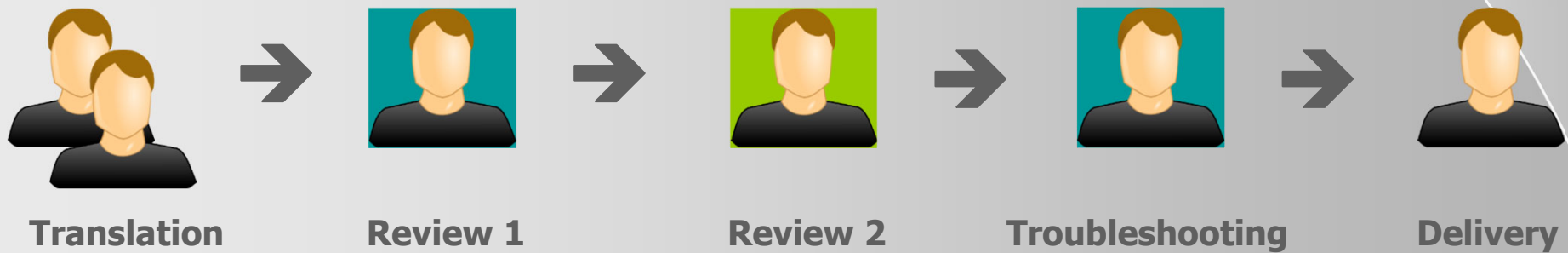
Unique 10-step localization workflow

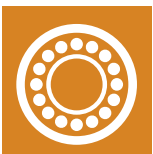


Market standard translation and review workflow



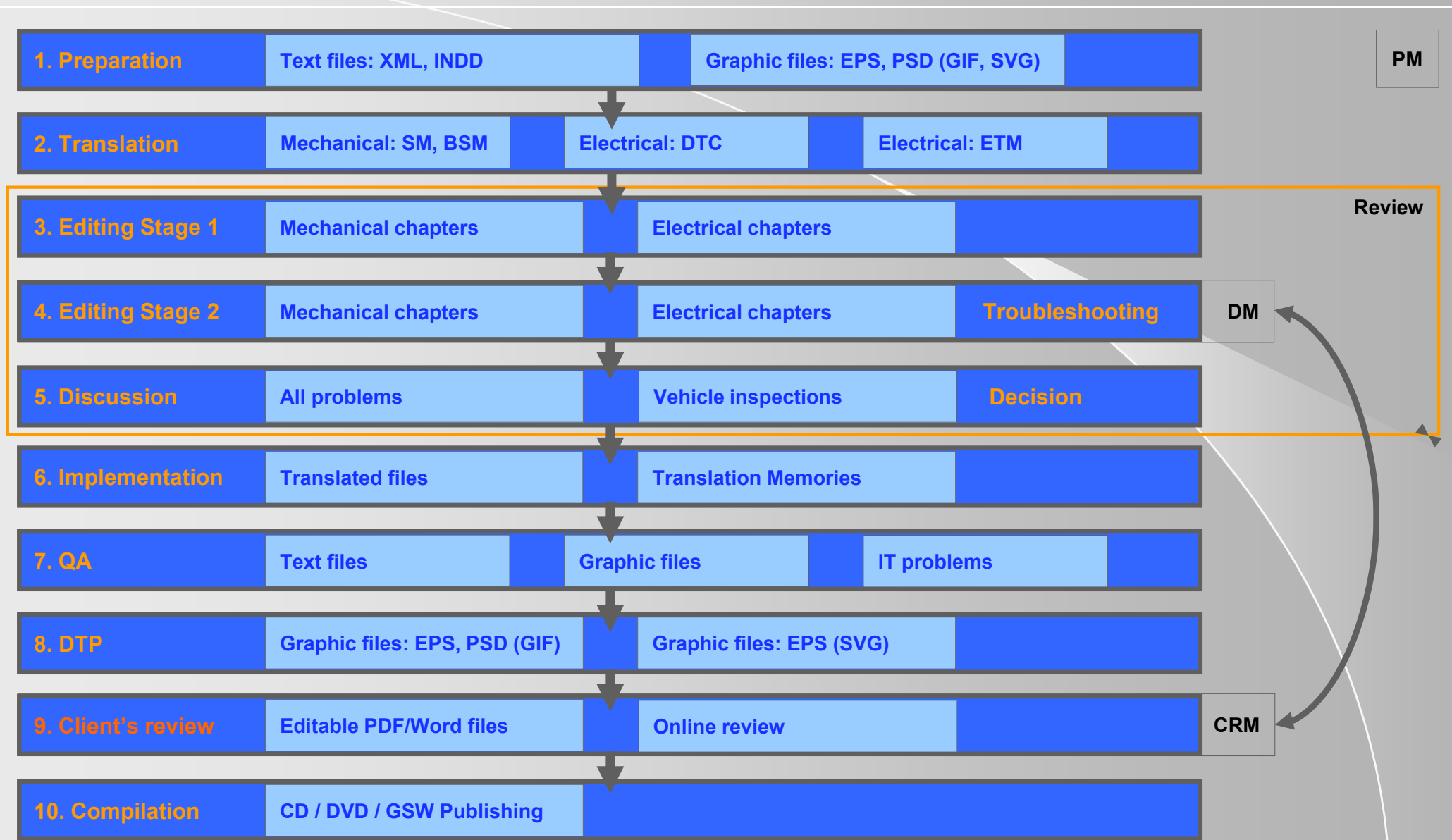
WIONET translation and review workflow





Company Profile

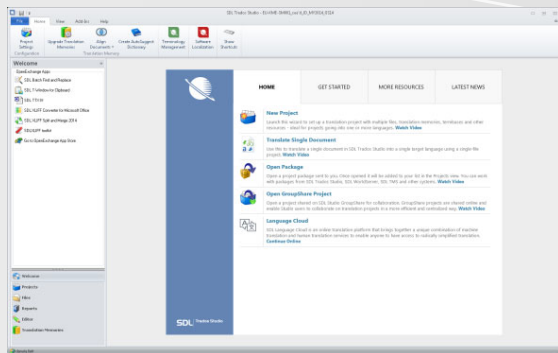
Unique 10-step localization workflow





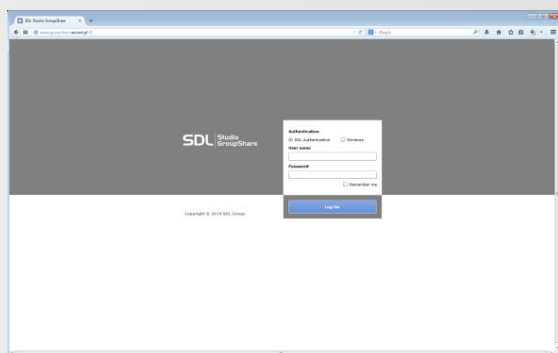
Specialist Translation Services

Computer Aided Translation Tools (CAT)



SDL Trados Studio

- Desk-top client application allowing to share server resources
- Complete working environment for project managers, translators and editors
- Wide variety of advanced functions allowing to streamline translation workflow



SDL GroupShare

- Server-based solution allowing to manage Clients, users, organizations, projects, Translation Memories (TMs) and termbases (TBs)
- Allows to centralize the resources in order to make them available for various project participants
- Allows to monitor and control every step of the workflow

SDL API

- Allowing integration with third party applications



Computer Aided Translation Tools (CAT)

Project structure



SDL Trados Studio - PL-KMP-SM053_Sorento_UM_MY2015

File Home View Add-Ins Help

Project Settings Configuration Open For Translation Open Open For Sign-off Batch Tasks Explore Containing Folder Add Files Delete Files Check Out Get Latest Version Change Phase Assign to Users in Phase Create Project Package Create Return Package Create Studio 2009 Package File details layout Layout

Files

Polish (Poland)

Project folders

- PL-KMP-SM053_Sorento_UM_MY2015
 - BRM
 - DTC
 - SM
 - SM_Images
- My Tasks
- Sent Tasks

☒ Include subfolders

Welcome Projects Files Reports Editor Translation Memories

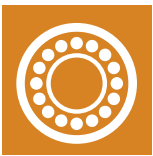
Name	Words	Status	Progress	Size	Path	Local State	Checked Out To
2015_4 Wheel Drive (4WD) System_MMC_ds_10.xml.sdlxliff	2389	Signed Off	100%	663 KB	\\SM\	Out-of-date	(none)
2015_Automatic Transaxle System_MMC_tr_100.xml.sdlxliff	9064	Signed Off	100%	3 200 KB	\\SM\	Out-of-date	(none)
2015_Automatic Transaxle System_MMC_tr_19.xml.sdlxliff	2285	Signed Off	100%	1 003 KB	\\SM\	Out-of-date	(none)
2015_Automatic Transaxle System_MMC_tr_97.xml.sdlxliff	4220	Signed Off	100%	1 592 KB	\\SM\	Out-of-date	(none)
2015_Automatic Transaxle System_MMC_tr_99.xml.sdlxliff	4381	Signed Off	100%	1 536 KB	\\SM\	Out-of-date	(none)
2015_Body (Interior and Exterior)_MMC_bd_5.xml.sdlxliff	17373	Signed Off	100%	4 002 KB	\\SM\	Out-of-date	(none)
2015_Body Electrical System_MMC_all_0.xml.sdlxliff	54701	In Translation	78%	14 086 KB	\\SM\	Out-of-date	(none)
2015_Brake System_MMC_br_19.xml.sdlxliff	11050	Signed Off	100%	2 686 KB	\\SM\	Out-of-date	(none)
2015_Clutch System_MMC_ch_2.xml.sdlxliff	2353	Signed Off	100%	659 KB	\\SM\	Out-of-date	(none)
2015_Driveshaft and axle_MMC_ds_10.xml.sdlxliff	4511	Signed Off	100%	1 368 KB	\\SM\	Out-of-date	(none)
2015_Emission Control System_MMC_en_127.xml.sdlxliff	1848	Signed Off	100%	466 KB	\\SM\	Out-of-date	(none)
2015_Emission Control System_MMC_en_47.xml.sdlxliff	1558	Signed Off	100%	359 KB	\\SM\	Out-of-date	(none)
2015_Emission Control System_MMC_en_80.xml.sdlxliff	1044	Signed Off	100%	313 KB	\\SM\	Out-of-date	(none)
2015_Engine Control Fuel System_MMC_en_127.xml.sdlxliff	16610	Signed Off	100%	5 650 KB	\\SM\	Out-of-date	(none)
2015_Engine Control Fuel System_MMC_en_365.xml.sdlxliff	28828	Signed Off	100%	9 396 KB	\\SM\	Out-of-date	(none)
2015_Engine Control Fuel System_MMC_en_47.xml.sdlxliff	14376	Signed Off	100%	5 404 KB	\\SM\	Out-of-date	(none)
2015_Engine Control Fuel System_MMC_en_80.xml.sdlxliff	10979	Signed Off	100%	4 232 KB	\\SM\	Out-of-date	(none)
2015_Engine Electrical System_MMC_en_127.xml.sdlxliff	15807	Signed Off	100%	3 190 KB	\\SM\	Out-of-date	(none)
2015_Engine Electrical System_MMC_en_365.xml.sdlxliff	15729	Signed Off	100%	3 031 KB	\\SM\	Out-of-date	(none)
2015_Engine Electrical System_MMC_en_47.xml.sdlxliff	9605	Signed Off	100%	1 889 KB	\\SM\	Out-of-date	(none)
2015_Engine Electrical System_MMC_en_80.xml.sdlxliff	6916	Signed Off	100%	1 541 KB	\\SM\	Out-of-date	(none)
2015_Engine Mechanical System_MMC_en_127.xml.sdlxliff	19512	Signed Off	100%	4 778 KB	\\SM\	Out-of-date	(none)
2015_Engine Mechanical System_MMC_en_365.xml.sdlxliff	22072	Signed Off	100%	5 350 KB	\\SM\	Out-of-date	(none)
2015_Engine Mechanical System_MMC_en_47.xml.sdlxliff	22901	Signed Off	100%	6 008 KB	\\SM\	Out-of-date	(none)
2015_Engine Mechanical System_MMC_en_80.xml.sdlxliff	18221	Signed Off	100%	4 575 KB	\\SM\	Out-of-date	(none)
2015_General Information_MMC_all_0.xml.sdlxliff	3784	Signed Off	100%	946 KB	\\SM\	Out-of-date	(none)
2015_Heating,Ventilation And Air Conditioning_MMC_ac_6.xml.sdlxliff	9745	Signed Off	100%	2 748 KB	\\SM\	Out-of-date	(none)
2015_Maintenance_MMC_all_0.xml.sdlxliff	5077	Signed Off	100%	939 KB	\\SM\	Out-of-date	(none)
2015_Manual Transaxle System_MMC_tr_101.xml.sdlxliff	2349	Signed Off	100%	754 KB	\\SM\	Out-of-date	(none)
2015_Manual Transaxle System_MMC_tr_226.xml.sdlxliff	1835	Signed Off	100%	596 KB	\\SM\	Out-of-date	(none)
2015_Restraint_MMC_ab_18.xml.sdlxliff	7403	Signed Off	100%	1 357 KB	\\SM\	Out-of-date	(none)
2015_Steering System_MMC_st_12.xml.sdlxliff	2757	Signed Off	100%	811 KB	\\SM\	Out-of-date	(none)
2015_Suspension System_MMC_ss_3.xml.sdlxliff	6780	Signed Off	100%	1 666 KB	\\SM\	Out-of-date	(none)
Restraints_additional.xlsx.sdlxliff	206	Translated	100%	48 KB	\\SM\	Up-to-date	(none)

File Details

No files selected.

File Details Analysis Statistics Confirmation Statistics Task History File Attributes

danuta.fiett



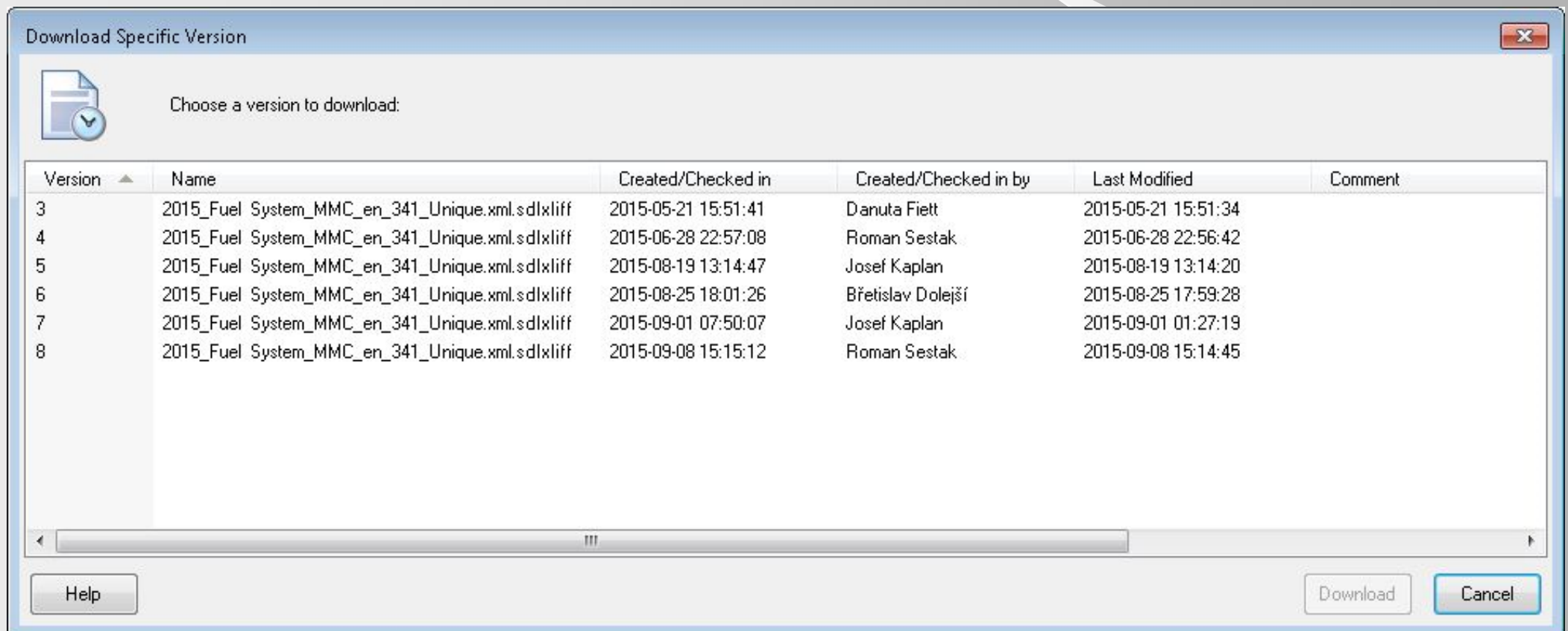
Computer Aided Translation Tools (CAT)

Translation workflow



Our standard translation workflow includes the following steps:

- Analysis and preparation
- Translation
- 3-stage review completed by 2 independent reviewers
- Changes implementation





Part 1 ■ WIONET Company Profile

Facts, people, processes, technology

10'



Part 2 ■ Aftersales Projects

From IT and Content Management to CAT translation

15'



Part 3 ■ Owner's Experience

Is paper still necessary? How about mobile devices?

15'



Part 4 ■ Marketing Challenges

Writers tell. Copywriters sell.

15'



Part 5 ■ Added Value

How can we bring value to your business?

?'



Automotive project experience

Selected projects — Workshop Manuals



Copyright © Free Vector Maps.com



Copyright Vector Maps.com



Copyright © Free Vector Maps.com

Poland

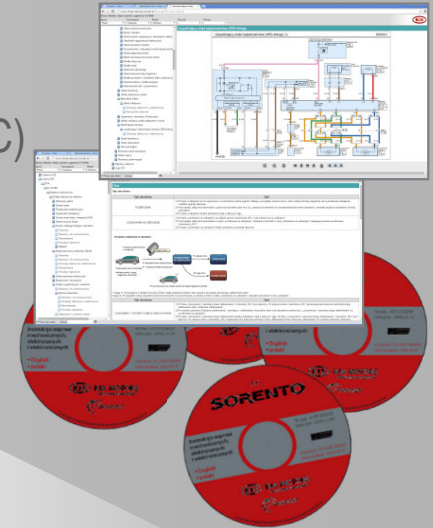
- Exclusive contracts with Hyundai, Kia and Mitsubishi
- 100+ publications localized to date (SM, ETM, BRM, DTC)
- Localized content available online (90+ end-users)

Czech Republic and Slovakia

- Exclusive contract with Kia since 2014
- 8 publications localized to date, 4 more in progress (SM, ETM, BRM, DTC)
- Localized content available online (100+ end-users)

Hungary

- Exclusive contract with Kia since 2014
- 6 publications localized to date, 3 more in progress (SM, DTC)
- Localized content available online (70+ end-users)





Automotive project experience

Selected projects — Workshop Manuals



Copyright © Free Vector Maps.com



Copyright Vector Maps.com



Copyright © Free Vector Maps.com



Product information					
Project code	Model	M-Code	MY	Word count	Images
Phase 7	2021				
CS-KME-SM026	Rio	YB FL	2021	1 604 008	2387
CS-KME-SM027	Ceed	CD	2021	3 231 800	6732
CS-KME-SM0T1	Ceed SW	CD	2019	3 112 358	
CS-KME-SM0T2	Ceed SW	CD	2020	3 490 558	
CS-KME-SM0T3	Ceed SW	CD	2021	3 497 426	
CS-KME-SM028	Sorento	MQ4 PHEV	2021	1 915 633	
CS-KME-SM029	Sorento	MQ4 HEV	2021	1 817 300	
CS-KME-SM030	Sorento	MQ4	2021	2 163 527	
CS-KME-SM031	Niro	DE EV	2021	1 021 667	
CS-KME-SM034	EV6	Part 1	2022	2 500 000	
Total text volume excluding images (words)				24 354 277	
Total text volume excluding images (A4 pages)			250	97 417	
Total text volume excluding images (reams)			1000	97	
Total text volume excluding images (boxes)			5	19,48	
Total number of image files including translatable text					9119



Automotive project experience

Selected projects — Workshop Manuals



Copyright © Free Vector Maps.com



Copyright © Free Vector Maps.com



Copyright © Free Vector Maps.com



Copyright © Free Vector Maps.com



20 boxes
or
0.75 cubic metres

(if printed double-sided on standard 80 g paper)

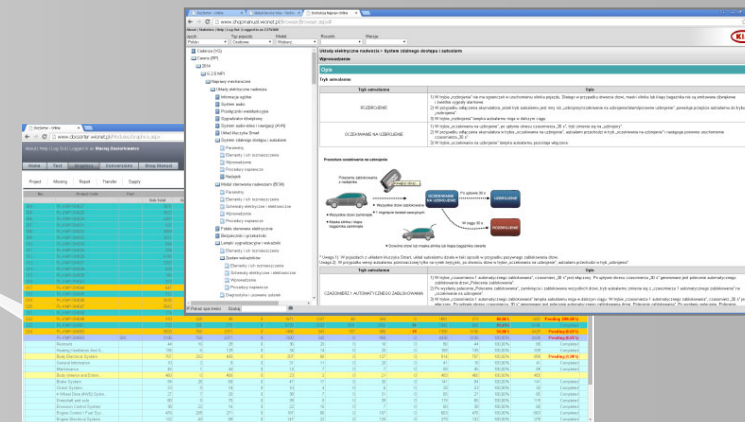


Content Management Experience In-house development



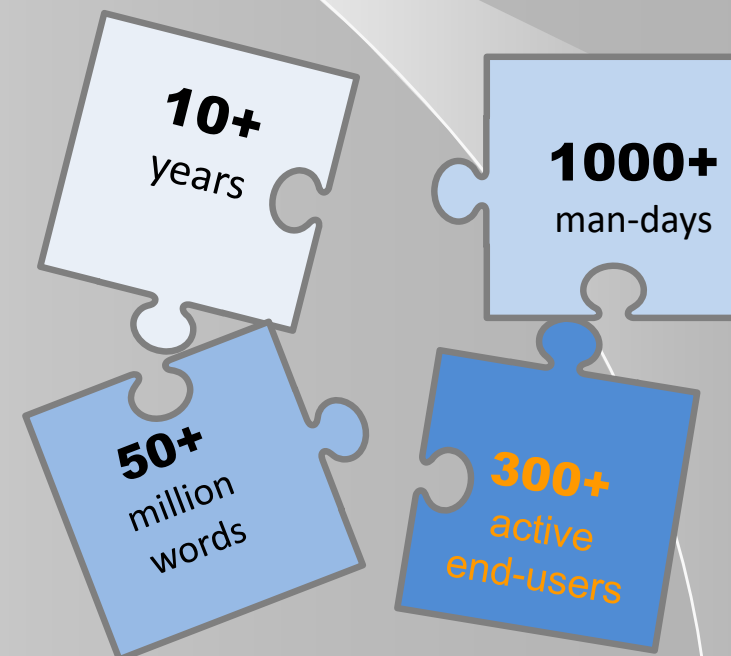
WIONET existing Content Management Systems

- WIONET Shop Manual — front end
- WIONET DocSorter — back end



Key facts and figures

- Continuous development since 2007
- 1000+ man-days of development work
- 400+ man-days of testing
- Successfully rolled out in 4 countries: PL, CZ, SK, HU
- 50+ million words of localized content
- 300+ active end-users





Content Management Experience In-house development



WIONET DocSorter

In-house developed CMS system to support Workshops Manuals localization

Module 1: **Text**

Key functionality: file structure analysis, sorting, splitting, merging and structure recreation, validation, managing internal duplicates, reusing archive content, reporting

Supported formats: XML, HTML

Module 2: **Graphics**

Key functionality: reference links analysis, managing internal/external duplicates, qualification wizard, synchronization, reporting

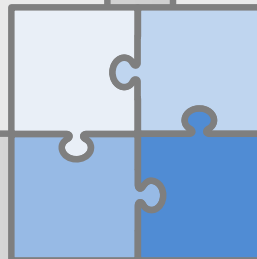
Supported formats: EPS, PSD, PDF, JPG, PNG, GIF, SWF

Module 3: **Conversions**

Key functionality: customized format conversions designed to enhance production processes

Module 4: **Shop Manual**

Key functionality: version control for production and test websites





Content Management Experience

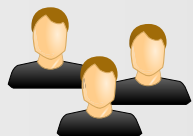
WIONET DocSorter



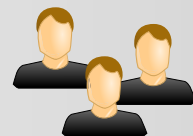
Step 1 →

Split into groups and configurations — enable teamwork

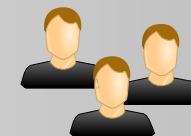
GI	General Information	100%
EM	Engine Mechanical 1	100%
EM	Engine Mechanical 2	100%
EM	Engine Mechanical 3	100%
EM	Engine Mechanical 4	100%
EE	Engine Electrical 1	100%
EE	Engine Electrical 2	100%
EE	Engine Electrical 3	100%
EE	Engine Electrical 4	100%



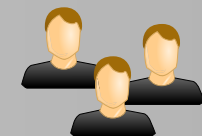
FL	Fuel System 1	100%
FL	Fuel System 2	100%
FL	Fuel System 3	100%
FL	Fuel System 4	100%
EC	Emissions Control 1	100%
EC	Emissions Control 2	100%
EC	Emissions Control 3	100%
EC	Emissions Control 3	100%



MT	Manual Transaxle 1	100%
MT	Manual Transaxle 2	100%
MT	Manual Transaxle 3	100%
AT	Automatic Trans. 1	100%
AT	Automatic Trans. 2	100%
DCT	Dual Clutch Trans.	100%
CH	Clutch System	100%
DS	Driveshaft & Axle	100%
SS	Suspension System	100%



GI	Steering System	100%
EM	Restraints	100%
EM	Brake System	100%
EM	Body Interior/Exterior	100%
EE	Body Electrical	100%
EE	HVAC	100%
TOC	Table of contents	100%



cee'd



Content Management Experience

WIONET DocSorter



Step 2 →

Exclude internal duplicates

GI	General Information	100%
EM	Engine Mechanical 1	100%
EM		60%
EM		15%
EM		12%
EE	Engine Electrical 1	100%
EE		30%
EE		12%
EE		12%

FL	Fuel System 1	100%
FL		60%
FL		12%
FL		12%
EC	Emissions Control 1	100%
EC		100%
EC		100%
EC		100%

MT	Manual Transaxle 1	100%
MT		60%
MT		100%
AT		100%
AT		100%
DCT	Dual Clutch Trans.	100%
CH	Clutch System	100%
DS	Driveshaft & Axle	100%
SS	Suspension System	100%

cee'd		
GI	Steering System	100%
EM	Restraints	100%
EM	Brake System	100%
EM	Body Interior/Exterior	100%
EE	Body Electrical	100%
EE	HVAC	100%
TOC	Table of contents	100%

New content

Internal duplicates

XML



Content Management Experience

WIONET DocSorter



Step 3 →

Apply external duplicates from other projects — MY's and models

GI	General Information	100%
EM	Engine Mechan	100%
EM		60%
EM		15%
EM		12%
EE	Engine Electric	100%
EE		30%
EE		12%
EE		12%

FL	Fuel System 1	100%
FL		60%
FL		12%
FL		12%
EC	Emissions Control 1	100%
EC		100%
EC		100%
EC		100%

MT	Manual Transaxle	100%
MT		60%
MT		100%
AT		100%
AT		100%
DCT	Dual Clutch Trans.	100%
CH	Clutch System	100%
DS	Driveshaft & Axle	100%
SS	Suspension System	100%

GI	Steering System	100%
EM	Restraints	100%
EM	Brake System	100%
EM	Body Interior/Exterior	100%
EE	Body Electrical	100%
EE	HVAC	100%
TOC	Table of contents	100%

New content

Archive content

Internal duplicates

XML



SORENTO

EU-KME-SM005	SM			DTC		
	MB	Words	%	MB	Words	%
Source	20	539,000		81	1,851,000	
CMS-1	14	378,000	30%	37	753,000	59%
CMS-2	—	—		—	—	



ceed

EU-KME-SM003	SM			DTC		
	MB	Words	%	MB	Words	%
Source	14	441,000		40	878,000	
CMS-1	12	365,000	17%	26	584,000	34%
CMS-2	5	115,000	74%	6	87,000	90%



Workload	Costs
✓ Every image localized only once	Usually difficult to measure May reach up to 75%
✓ Automated handling of duplicates	
✓ Enhanced review and qualification	



Content Management Experience In-house development



WIONET Shop Manual

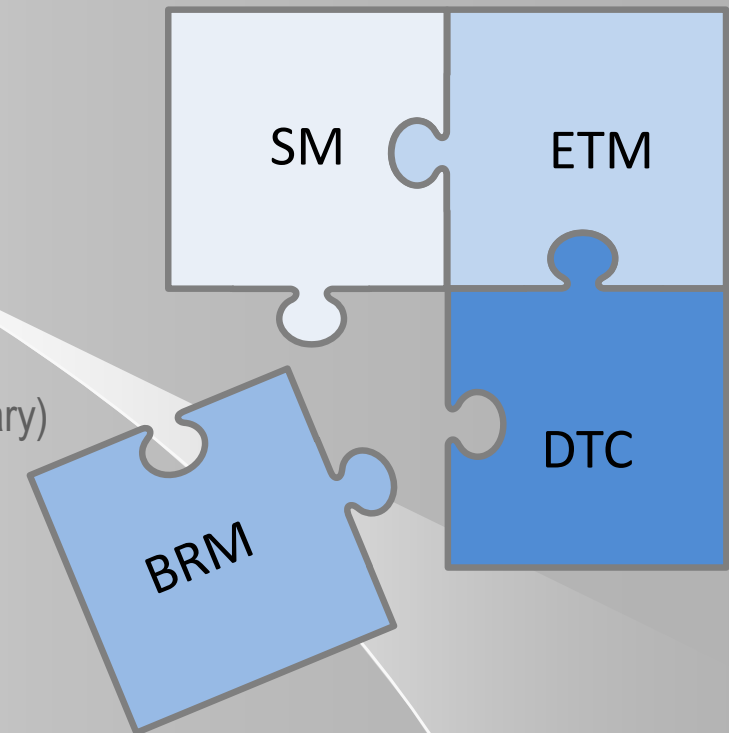
In-house developed Internet portal for publishing technical Aftersales content.

Key facts:

- Developed in-house since 2009
- Started with desktop version, migrated to online version
- Currently used in 5 countries (Korea, Poland, Czech Republic, Slovakia, Hungary)
- 300-400 concurrent users
- Microsoft .NET technology

Key features:

- Hyundai/Kia Global Service Way structure
- Supports all major Workshop Manual publications
- Multilingual content (English, Polish, Czech, Hungarian)
- Supports vector images (PDF, SVG)
- User statistics and activity tracking
- Mobile/responsive version for GDS/KDS devices under development





Content Management Experience WIONET Shop Manual Online



Supported Workshop Manuals

The screenshot displays the WIONET Shop Manual Online interface. On the left, a sidebar lists supported vehicles: Passenger, G 2.0 MPI, G 2.0 GDI, 1.7 TCI-U2, CULP (U-II), cee'd (EU), cee'd (JD), Magentis (MG), Opirus (GH), Optima (HEV), Optima (TF), Overhaul A/T, Overhaul M/T, Picanto (SA), Picanto (TA), Rio (JB), Rio (UB), Sorento (BL), Sorento (XM), Soul (AM), Soul (PS), Sportage (KM), Sportage (SL), Sportage (SLE), and Venga (YN). A circular callout highlights the 'Shop Manual' option for the G 2.0 MPI. The main content area shows four different manual views: 1. 'SM' (Shop Manual) for the G 2.0 MPI, displaying a table of contents and a diagram of the engine. 2. 'ETM' (Electrical Troubleshooting Manual) for the G 2.0 MPI, showing a detailed electrical wiring diagram. 3. 'BRM' (Body Shop Manual) for the G 2.0 MPI, displaying a 3D model of the car's body. 4. 'DTC' (DTC Guide) for the G 2.0 MPI, showing a list of diagnostic trouble codes and their descriptions. The interface includes a top navigation bar with 'Instrukcja Napraw Online' and 'www.shopmanual.wionet.pl/Browser/Browser.aspx'. A bottom bar contains 'Pokaż spis treści' and 'Szukaj'.



Part 1 ■ WIONET Company Profile

Facts, people, processes, technology

10'



Part 2 ■ Aftersales Projects

From IT and Content Management to CAT translation

15'



Part 3 ■ Owner's Experience

Is paper still necessary? How about mobile devices?

15'



Part 4 ■ Marketing Challenges

Writers tell. Copywriters sell.

15'



Part 5 ■ Added Value

How can we bring value to your business?

?'



Automotive project experience

Selected projects — Owner's Manuals, Warranty Booklets



Key facts and figures:

- All types of consumer publications for several brands
- Development, translation, DTP and printing
- Specialist consultancy services
- High quality offset or digital printing services (color or black)
- 75+ publications completed to date





Automotive project experience

Selected projects — Owner's Manuals, Warranty Booklets



- Products stock monitoring and logistics (Groupe CAT)





Automotive project experience

Selected projects — Owner's Manuals, Warranty Booklets



Key facts and figures:



Stan_magazynu_HYUNDAI_Online

https://docs.google.com/spreadsheets/d/1Sd45vJIKomLvix5YTQY1jyrzHFZ7O70liRDto4xXuE/edit#gid=1184850133

Stan_magazynu_HYUNDAI_Online

Plik Edycja Wyświetlanie Wstaw Formatuj Dane Narzędzia Dodatki Pomoc Ostatnia zmiana: wczoraj o 13:03, WIONET Polska

Project	Scope	Proposal submitted	Proposal expiry	Proposal approved	Delivery started	Delivery completed	Invoice number	Sales forecast	Stan minimalny	Dodruk	Stan na 2017-12-20	1 2018-01-09	2 2018-01-16	3 2018-01-23	4 2018-01-30
Owner's Manuals • Instrukcje obsługi															
PL-HMP-OM023	10 IA 2015	Grafpress							200	250	104	78	338	302	
PL-HMP-OM023	Druk 500	2017-03-14	2017-05-31	2017-03-14		2017-04-04	1703008-PL-HMP								
PL-HMP-OM023.1	Druk 250	2017-11-20	2018-02-28	2017-12-04		2018-01-13	1712005-PL-HMP								
PL-HMP-OM023.2	Druk 250	2018-02-13	2018-05-31	2018-02-20		2018-03-16	1802007-PL-HMP								
PL-HMP-OM011	120 GB 2016	Grafpress							500	500	900	660	560	380	
PL-HMP-OM011	Druk 2000	2016-07-28	2016-09-30	2016-09-01	2016-10-03	2016-10-06	1609008-PL-HMP								
PL-HMP-OM011.1	Druk 1500	2017-02-10	2017-03-31	2017-02-10		2017-03-07	1702008-PL-HMP								
PL-HMP-OM011.2	Druk 1500	2017-06-06	2017-07-31	2017-06-22		2017-07-19	1706009-PL-HMP								
PL-HMP-OM011.3	Druk 1000	2017-11-06	2018-01-31	2017-11-13	2017-12-15	2017-12-27	1711011-PL-HMP								
PL-HMP-OM011.4	Druk 500	2018-01-12	2018-03-31	2018-01-12		2018-02-05	1801008-PL-HMP								
PL-HMP-OM011.5A	Druk 500	2018-02-14	2018-05-31												
PL-HMP-OM011.5B	Druk 1000	2018-02-14	2018-05-31												
PL-HMP-OM011.5C	Druk 1500	2018-02-14	2018-05-31	2018-02-20		2018-03-16	1802008-PL-HMP								
PL-HMP-OM022	120 JC 2015	Grafpress							150	500	0	0	422	374	
PL-HMP-OM022	Druk 500	2017-02-10	2017-03-31	2017-02-10		2017-03-15	1702010-PL-HMP								
PL-HMP-OM022.1	Druk 350	2017-07-27	2017-10-31	2017-08-08		2017-08-28	1708005-PL-HMP								
PL-HMP-OM022.2	Druk 500	2017-11-06	2018-01-31	2017-12-04		2018-01-13	1712004-PL-HMP								













Magazyn





Automotive project experience

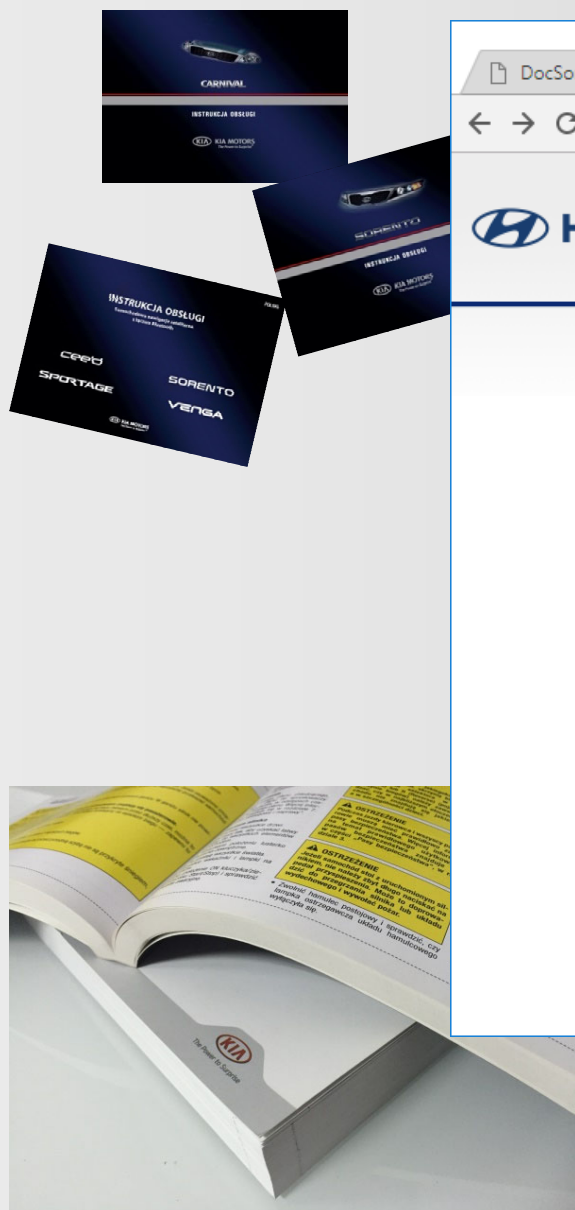
Selected projects — Mobile devices

Brand	Link	Zone	WWW	Mobile App
 HYUNDAI	http://www.hyundai.pl/Serwis/Instrukcje_obslugi/	Public	<ul style="list-style-type: none"> PDF Standard 	
 Mercedes-Benz	http://www.mercedes-benz.pl/content/poland/mpc/mpc_poland_website/pl/home_mpc/passengercars/home/servicesandaccessories/interactive_manual.html#_int_passengercars_home_quick-link_interactive_manual	Public	<ul style="list-style-type: none"> HTML 	
 Opel	http://www.opel.pl/twoj-opel/eksplotacja/instrukcje-obslugi.html	Public	<ul style="list-style-type: none"> PDF Standard 	
 ŠKODA	http://manual.skoda-auto.com/456/pl-PL/Models/ http://www.skoda-auto.com/en/mini-apps/owners-manuals/	Public	<ul style="list-style-type: none"> PDF Standard HTML 	
 TOYOTA	https://www.toyota.pl/tme#/my-toyota/eManual	Client	<ul style="list-style-type: none"> PDF Standard 	—
 Audi	https://my.audi.com/content/pl/myaudi/pl/home.html	Client	<ul style="list-style-type: none"> Flash 	—
 KIA	http://www.kia.com/pl/ http://www.kia.com/eu/models/ceed_id-5dr/	—	—	—
 Volkswagen	https://www.volkswagen.pl/pl.html http://www.volkswagen.de/de.html	—	—	—
 MITSUBISHI MOTORS	http://www.mitsubishi.pl/	—	—	—



Automotive project experience

Selected projects — Owner's Manuals, Warranty Booklets



DocSorter - Online x Download Center x

www.hyundai-2.wionet.eu


Logged in as Maciej.Gasiorkiewicz | Log Out

HYUNDAI

Instrukcje obsługi:

Hyundai IONIQ AE EV

PL-HMP-OM016



Ebook ?

- A-1. Ebook Standard PDF
IONIQ_AE_EV_PL_170223_[Ebo...]
17.6 MB
- A-2. Ebook Dedykowany PDF
IONIQ_AE_EV_Opis_170326_[Eb...]
4.30 MB
- B-1. Ebook Standard EPUB
IONIQ_AE_EV_Opis_170319_[Eb...]
4.18 MB
- B-2. Ebook Dedykowany EPUB
IONIQ_AE_EV_Opis_170326_[Eb...]
10.2 MB
- B-3. Ebook Dynamiczny EPUB
IONIQ_AE_EV_Opis_170319_[Eb...]
8.58 MB
- C-3. Ebook Dynamiczny MOBI

Multimedia ?

- Audiobook
IONIQ_AE_EV_Ladowanie_1701...
9.31 MB

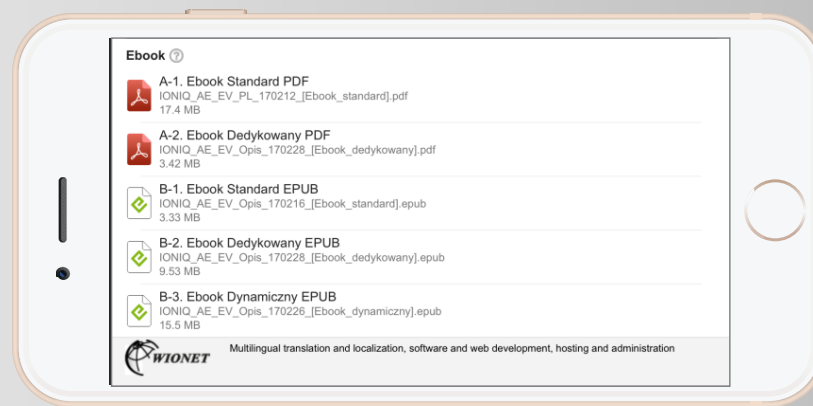
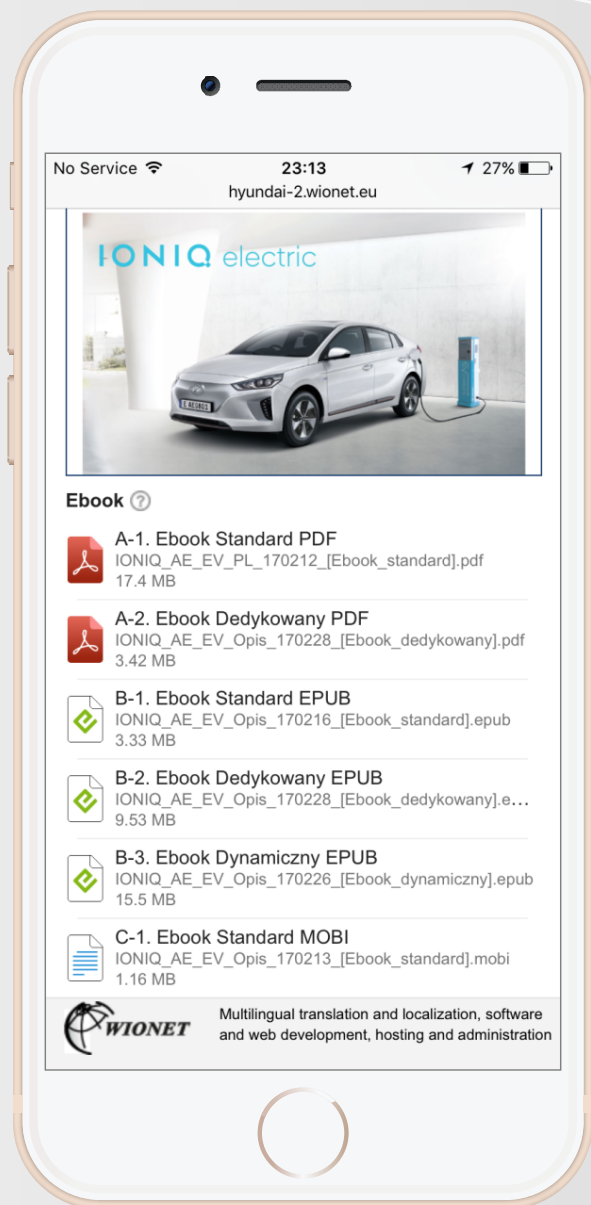
Press ?

- Press Body PDF
IONIQ_AE_EV_PL_Body_170130...
56.3 MB
- Press Cover PDF
IONIQ_AE_EV_PL_Cover_17020...
649 KB



Automotive project experience

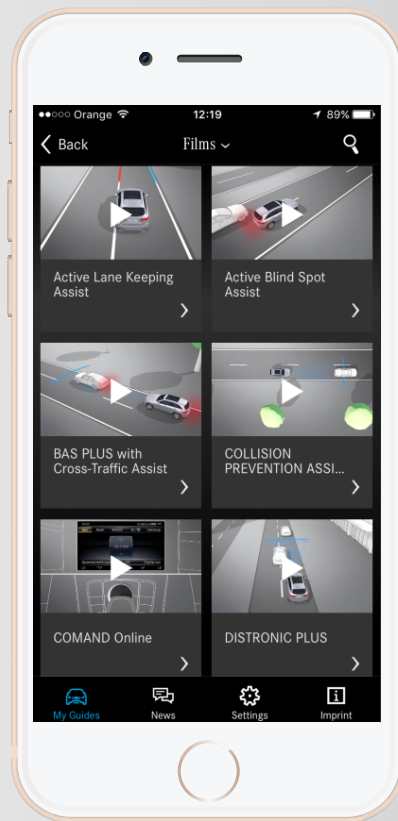
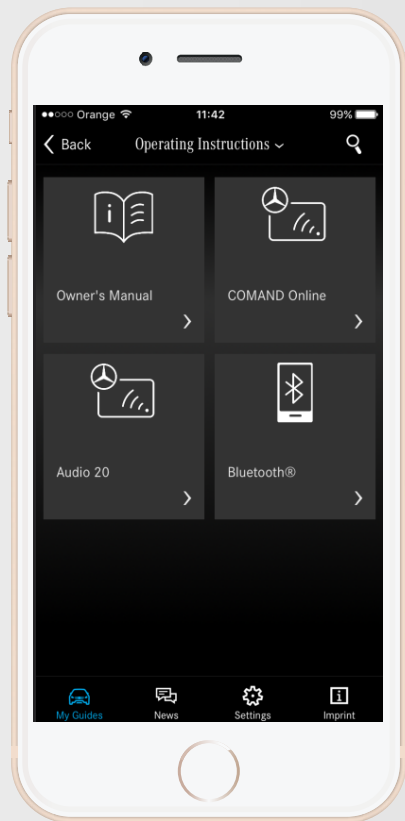
Selected projects — Mobile websites and files





Automotive project experience

Selected projects — Mobile Apps





Part 1 ■ WIONET Company Profile

Facts, people, processes, technology

10'



Part 2 ■ Aftersales Projects

From IT and Content Management to CAT translation

15'



Part 3 ■ Owner's Experience

Is paper still necessary? How about mobile devices?

15'



Part 4 ■ Marketing Challenges

Writers tell. Copywriters sell.

15'



Part 5 ■ Added Value

How can we bring value to your business?

?'



Automotive project experience

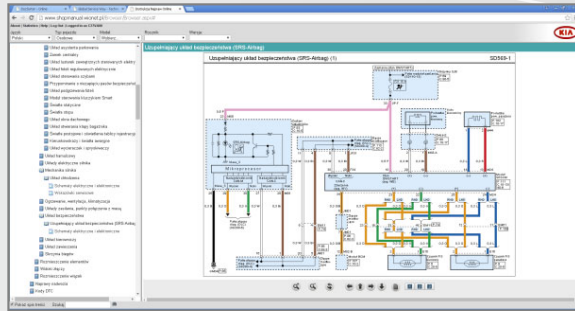
Selected projects — Marketing folders





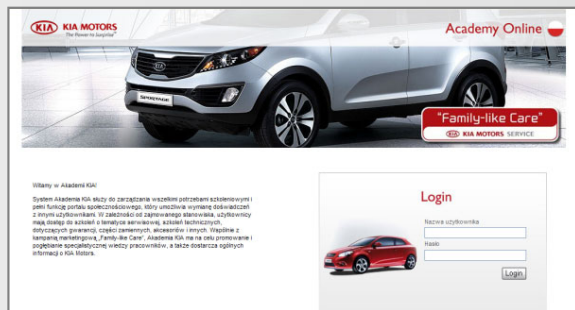
Automotive project experience

Selected projects — Online



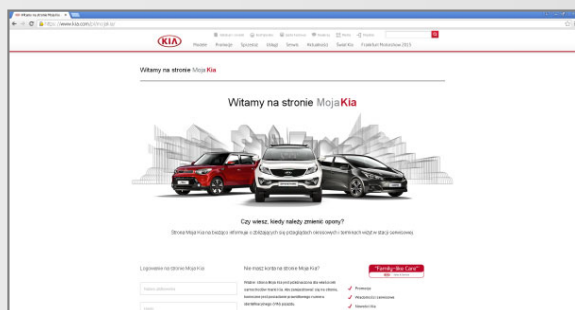
WIONET Shop Manual Online

- Developed GSW European mirror site to support Workshop Manuals publication
- Developed dedicated CMS system for offline and online content management



European Learning Management System (ELMS)

- Localization to Polish and Italian
- Assisted with development, implementation and testing
- Provided end-user support (hotline services)



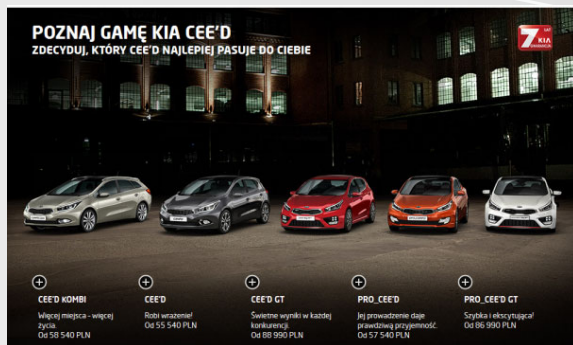
MyKia CRM System

- Localization to Polish
- Currently assisting with development, implementation and testing



Automotive project experience

Selected projects — Online



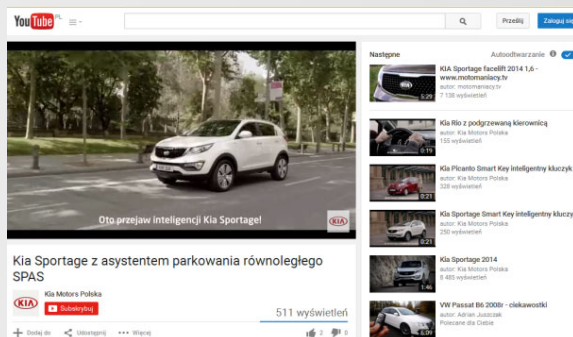
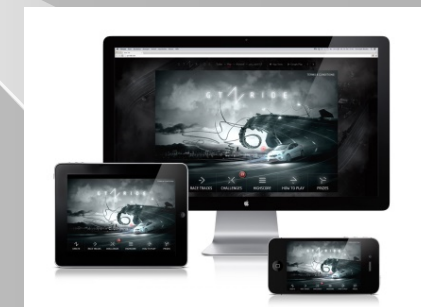
Online content management and localization

- External microsites (hosted locally at Kia or WIONET servers)
- Model Specials (Sitecore)
- Experience pages (Sitecore)
- PIP pages (Sitecore)
- Showrooms (KCC Backoffice)



Facebook profiles management and localization

- Apps, games, contests
- Examples include: Roar-o-meter, GT Ride, Marbella
- Posts, notes



Multimedia

- Videos post production: voice over and subtitles
- Banners

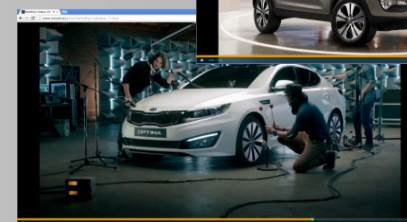
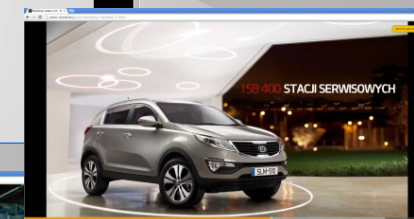
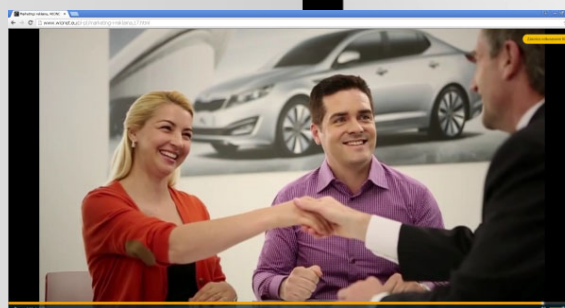
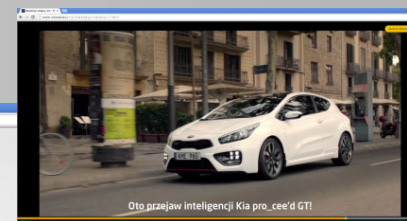


Automotive project experience

Selected projects — Multimedia



- Model promotional videos
- Corporate promotional videos
- Training videos





Part 1 ■ WIONET Company Profile

Facts, people, processes, technology

10'



Part 2 ■ Aftersales Projects

From IT and Content Management to CAT translation

15'



Part 3 ■ Owner's Experience

Is paper still necessary? How about mobile devices?

15'



Part 4 ■ Marketing Challenges

Writers tell. Copywriters sell.

15'



Part 5 ■ Added Value

How can we bring value to your business?

?'



Added Value
Powerful. Strong. Accurate. Effective. Smart.



There's no substitute for complex technical projects than our single source turnkey solutions

- Single source turn-key solutions
- Perfect for complex projects
- Automotive industry professionals
- 25+ years of experience
- Second-to-none localization process
- Proven technology



Multilingual Translation and Localization Content Management and Information Technology **Solutions for the Automotive Industry**

For further details please contact:

WIONET Polska Sp. z o.o.

Drawska 16, 02-202 Warszawa, Poland

Telephone: +48 22 577 0000

Danuta Krajewska <danuta.krajewska@wionet.pl>

Maciej Gasiorkiewicz <maciej.gasiorkiewicz@wionet.pl>

Web: www.wionet.eu